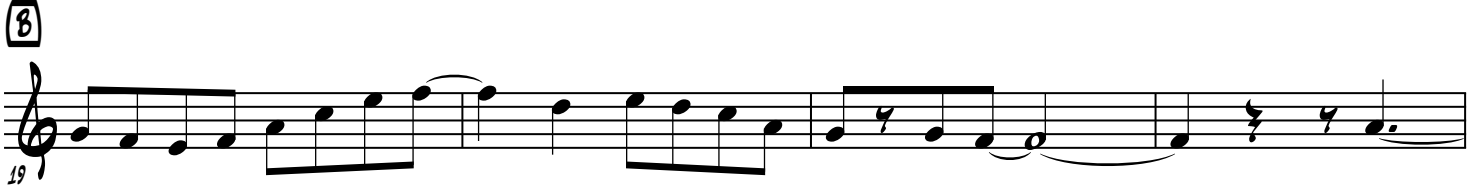


WHY CRY?

SOLO DE ZOOT SIMS

TRANSCRIBED BY: CRISTIAN H. C.

1ER CORO **A**



2ND CORO (A)

Musical staff 1, starting at measure 35. It begins with a whole note G4, followed by a quarter rest, another quarter rest, and then a series of eighth notes: A4, B4, C5, B4, A4, G4, F4, E4, D4, C4.

Musical staff 2, starting at measure 39. It begins with a quarter note G4, followed by quarter notes A4, B4, C5, B4, A4, G4, F4, E4, D4, C4, B4, A4, G4, F4, E4, D4, C4.

Musical staff 3, starting at measure 43. It begins with a quarter note G4, followed by quarter notes A4, B4, C5, B4, A4, G4, F4, E4, D4, C4, B4, A4, G4, F4, E4, D4, C4.

Musical staff 4, starting at measure 47. It begins with a quarter note G4, followed by quarter notes A4, B4, C5, B4, A4, G4, F4, E4, D4, C4, B4, A4, G4, F4, E4, D4, C4.

Musical staff 5, starting at measure 51. It begins with a quarter note G4, followed by quarter notes A4, B4, C5, B4, A4, G4, F4, E4, D4, C4, B4, A4, G4, F4, E4, D4, C4.

Musical staff 6, starting at measure 55. It begins with a quarter note G4, followed by quarter notes A4, B4, C5, B4, A4, G4, F4, E4, D4, C4, B4, A4, G4, F4, E4, D4, C4.

Musical staff 7, starting at measure 59. It begins with a quarter note G4, followed by quarter notes A4, B4, C5, B4, A4, G4, F4, E4, D4, C4, B4, A4, G4, F4, E4, D4, C4.

Musical staff 8, starting at measure 63. It begins with a quarter note G4, followed by quarter notes A4, B4, C5, B4, A4, G4, F4, E4, D4, C4, B4, A4, G4, F4, E4, D4, C4.